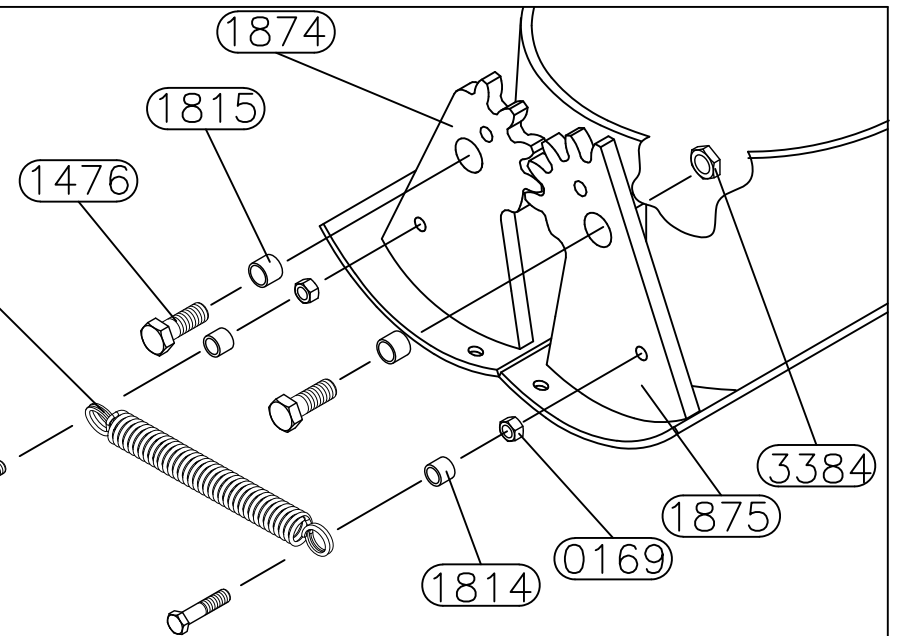


410-R & 413-R ONLY

ALL OTHERS



PART NO.	DESCRIPTION
△ 0019	LOCKWASHER
△ 0114	GATE LEVER BOLT
△ 0118	GATE SPRING BOLT
⊕ 0154	GATE LEVER SPRING
△ 0169	HEX NUT
△ 0359	GATE SPRING
△ 3384	THIN LOCK NUT

⊕ 440-R, 454-R, & 483-R

PART NO.	DESCRIPTION
△ 1814	SPRING SPACER
△ 1815	PIVOT BUSHING
1874	RADIUS ARM, 4 TOOTH
1875	RADIUS ARM, 5 TOOTH
2620	R GATE COMPLETE
3002	R GATE REPAIR KIT
△ 1476	PIVOT BOLT

△ INCLUDED IN PN 3002 REPAIR KIT

WHEN ORDERING PARTS, SPECIFY:

1. THIS DRAWING NO: 20-35
2. PART NUMBER
3. QUANTITY
4. DESCRIPTION

REF	DESCRIPTION	ITEM NUMBER							
		410-R	413-R	420-R	427-R	440-R	454-R	483-R	
A	"A" LEG ASSEMBLY	2884	2885	2886	2887	2888	2889	2890	
B	"V" LEG ASSEMBLY	2891	2892	2893	2894	2895	2896	2897	
C	RING SECTOR, PIPE	2898	2899	2900	2901	2902	2903	2904	
D	COMPLETE FRAME	2877	2878	2879	2880	2881	2882	2883	
E	GATE LEVER	2905	2906	2907	2908	2909	2910	2911	
F	GATE PLATE ONLY	2332	2332	2332	2332	2332	2332	2332	
G	GATE PLATE ASSEMBLY	2505	2505	2505	2505	2505	2505	2505	

NOTE: RADIUS ARMS AND GATE PLATES MAY BE ORDERED SEPARATELY USING CORRESPONDING PART NUMBERS AS SHOWN - HOWEVER - FOR EASE OF ASSEMBLY AND PROPER GATE ALIGNMENT IT IS RECOMMENDED THAT THE "GATE PLATE ASSEMBLY" - REF "G" - BE ORDERED THE "GATE PLATE ASSEMBLY" IS FURNISHED COMPLETE WITH RADIUS ARMS ATTACHED AT EACH END - TWO GATE PLATE ASSEMBLIES ARE REQUIRED PER GATE

GAR-BRO MANUFACTURING CO.
104 BOLTON SULLIVAN DRIVE P.O. DRAWER 1077
HEBER SPRINGS, ARKANSAS - 72543-1077

PARTS LIST

"R" SERIES

LIGHTWEIGHT ROUND-GATE BUCKETS

STANDARD 16" DIAMETER GATE

SCALE	NONE	SHOP NO.	PARTS
DATE	2/27/2020	SHIPPING CUBICS	
REVISED		DRAWING NO.	
MADE BY	LAP	20-35	
CHANGED TO/FROM	77-46	SHEET	A OF A
SUPERSEDES			