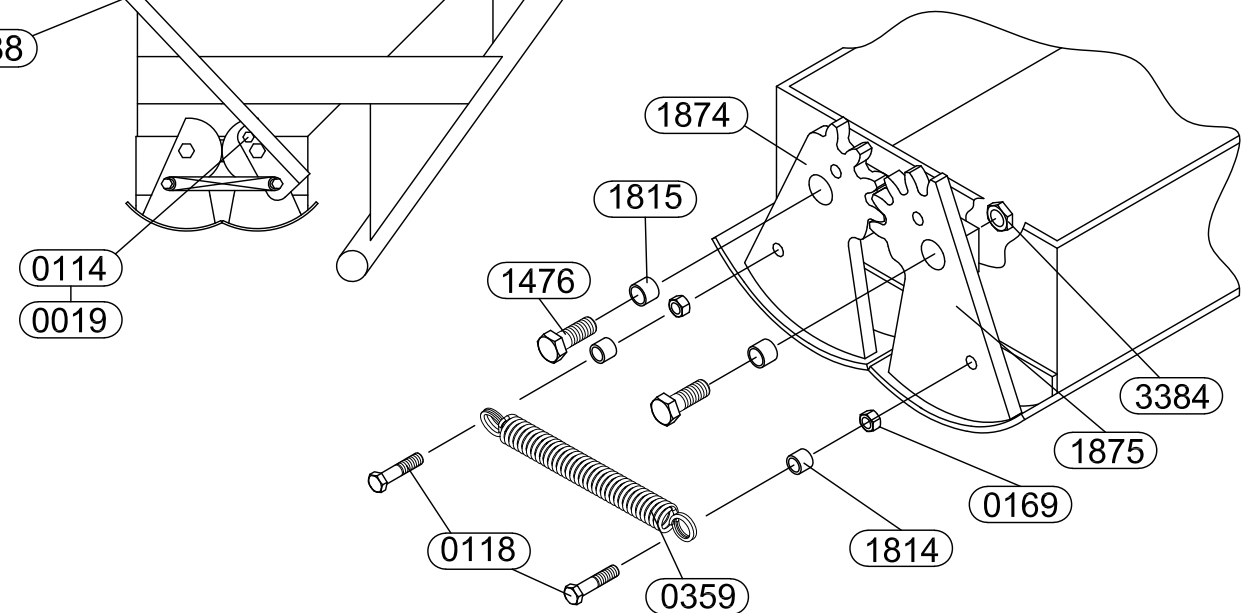
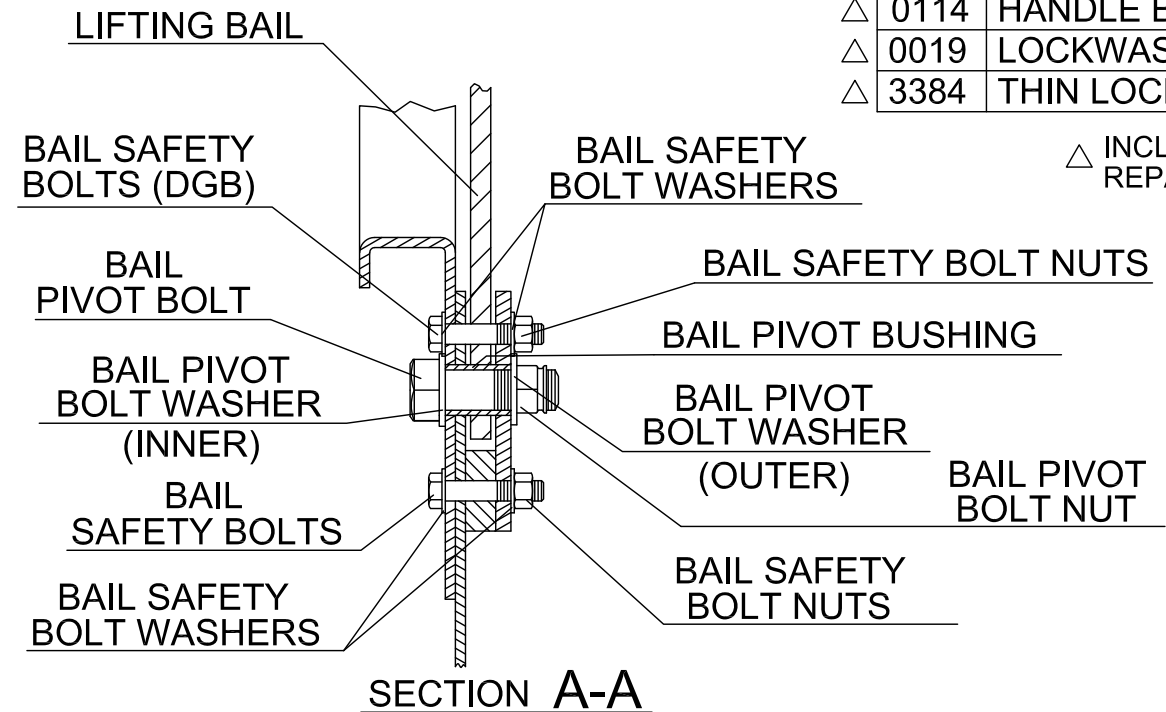
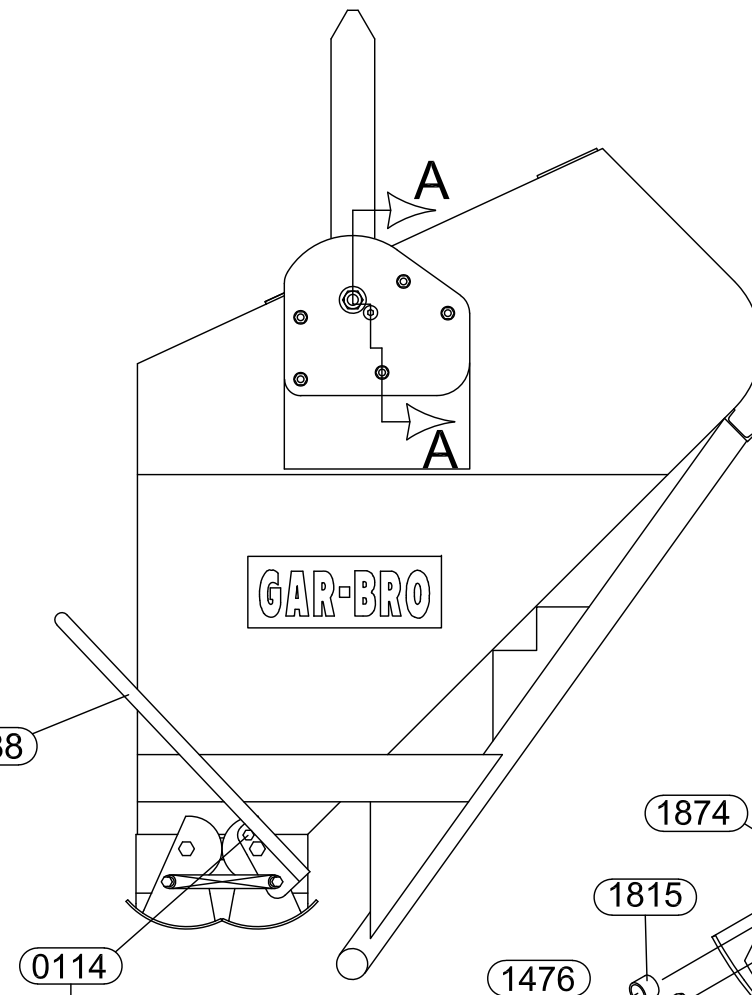
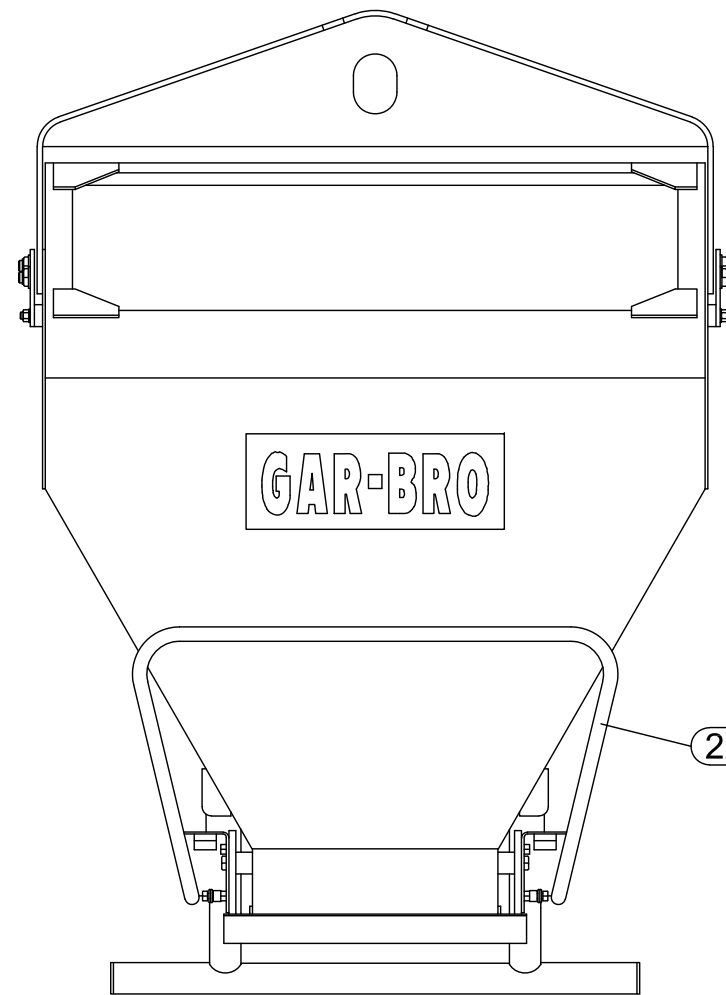


DESCRIPTION	446-L	466-L	496-L	4126-L	4156-L	4186-L
LIFTING BAIL	3237	3238	3239	3240	3241	3343
BAIL PIVOT BOLT	3250	3250	2678	2678	2678	3171
BAIL PIVOT BOLT NUT	1761	1761	3065	3065	3065	2683
BAIL PIVOT BUSHING	3246	3246	3247	3248	3249	3344
BAIL PIVOT BOLT WASHER OUTER	0203	0203	0274	0274	0274	3341
BAIL PIVOT BOLT WASHER INNER	0203	0203	1220	1220	1220	2375
BAIL SAFETY BOLT	2704	2704	2703	1626	1626	1626
BAIL SAFETY BOLT (DGB)	2703	2703	3395	1626	1626	1626
BAIL BOLT NUT	2245	2245	2245	1181	1181	1181
BAIL BOLT WASHER	2404	2404	2404	2185	2185	2185

PART #	DESCRIPTION
△ 3283	THREAD LOCKING CMPD
3000	"G" GATE REPAIR KIT
2289	"G" GATE COMPLETE
2288	GATE LEVER
△ 1834	GATE PLATE/ R ARM ASSY
△ 1815	PIVOT BUSHING
△ 1814	SPRING SPACER
△ 1476	PIVOT BOLT
△ 0359	GATE SPRING
△ 0169	HEX NUT
△ 0118	GATE SPRING BOLT
△ 0114	HANDLE BOLT
△ 0019	LOCKWASHER
△ 3384	THIN LOCK NUT

WHEN ORDERING PARTS, SPECIFY:
 1. THIS DRAWING NO: 20-34
 2. PART NUMBER
 3. QUANTITY
 4. DESCRIPTION

△ INCLUDED IN PN 3000 REPAIR KIT



FOR BUCKETS MANUFACTURED AS FOLLOWS:
 ITEM 446-L BUILT AFTER NOVEMBER 1998 S.O. 10569
 ITEM 466-L BUILT AFTER SEPTEMBER 1992 S.O. 6579
 ITEM 496-L BUILT AFTER OCTOBER 1991 S.O. 6071
 ITEM 4126-L BUILT FEBRUARY 1993 S.O. 6815
 ITEM 4156-L BUILT AFTER MAY 1996 S.O. 8779
 FOR BUCKETS MANUFACTURED BEFORE ABOVE DATES, SEE DRAWING 20-33

GAR-BRO MANUFACTURING CO.
 104 BOLTON SULLIVAN DRIVE P.O. DRAWER 1077
 HEBER SPRINGS, ARKANSAS - 72543-1077

ITEM 446-L THRU. 4186-L
 "L" SERIES LIGHTWEIGHT
 LAYDOWN BUCKET
 PARTS LIST

SCALE	NONE	SHOP NO.	SALES
DATE	2/17/2020	SHIPPING CUBICS	
REVISED		DRAWING NO. 20-34	
MADE BY	LAP		
CHANGED TO/FROM			
SUPERSEDES	01-55	SHEET	A OF A